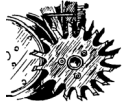


SCW-75B4D



DIMPLE CLOSING WHEEL

Installation Instructions



Martin Planter Attachments

Martin Industries LLC

206 Elk Fork Road

Elkton, KY 42220

Telephone: 270-265-5817

E-Mail: martin@martinandcompany.com

www.martinandcompany.com

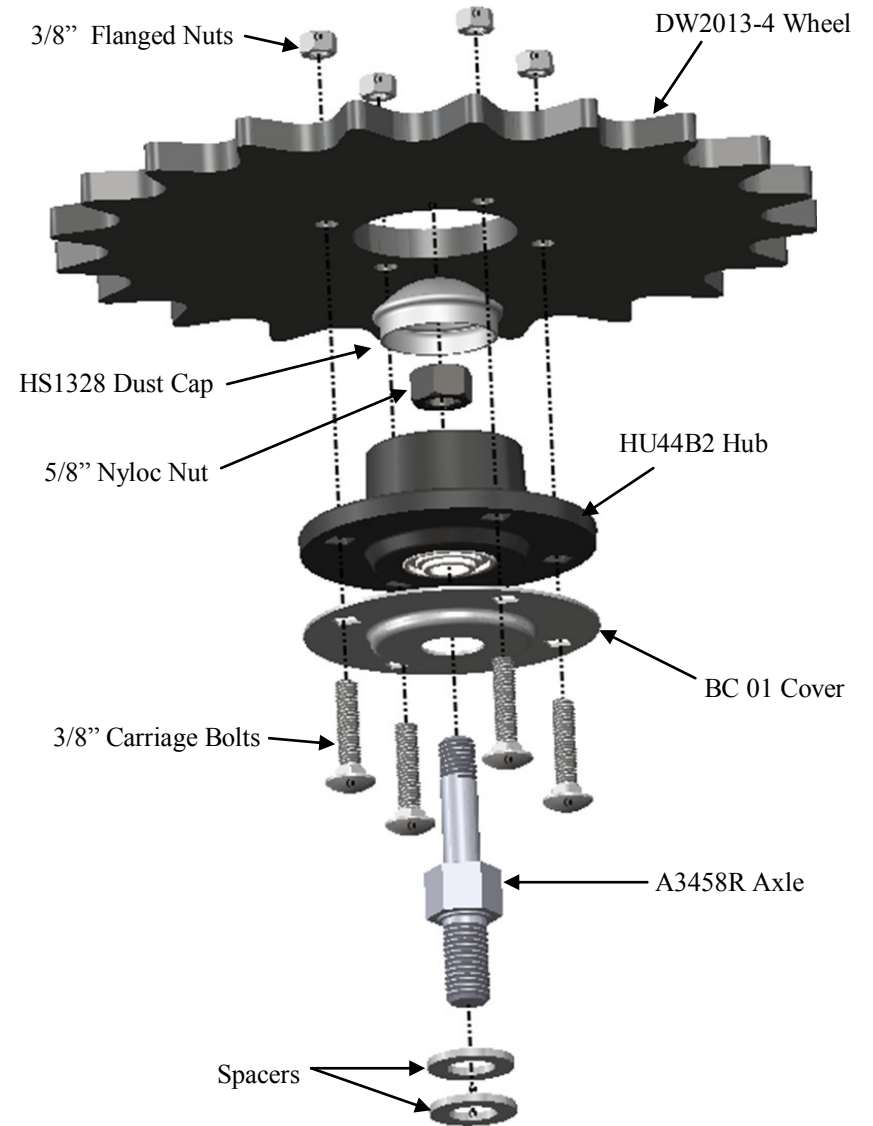


NOTE:

20 POINT DIMPLE WHEEL SHOWN.

14 POINT DIMPLE WHEEL AVAILABLE.

- 1) Place the BC01 Bearing cover onto the A3458R axle as illustrated in the diagram to the right.
- 2) Push the A3458R axle up through the hole in the bearing within the HU44B2 hub.
- 3) Add the 5/8 nyloc nut and torque to 90 ft lb..
- 4) Add the DW2013 wheel to the HU44B2 hub assembly and align the holes in the DW2013 wheel with the holes in the HU44B2 hub.
- 5) Insert the four 3/8 carriage bolts through the holes, thread on the four 3/8" nuts and torque them to 35 ft lb.
- 6) Add the HS1328 dust cover.
- 7) The instructions above for the right side, left side will be same except use the A3458L axle.



INSTRUCTIONS FOR THE DW2013 DIMPLE WHEEL ON THE RIGHT SIDE OF THE DRILL (WHEN VIEWED FROM BEHIND)

- 1) Remove smooth closing wheel from drill by unthreading axle from the closing wheel arm.
- 2) Install the SCW 75B4DR on the right side and SCW 75B4DL on the left side.
- 3) Add or remove spacers as needed. We have found that 2 spacers are required for most soil conditions.