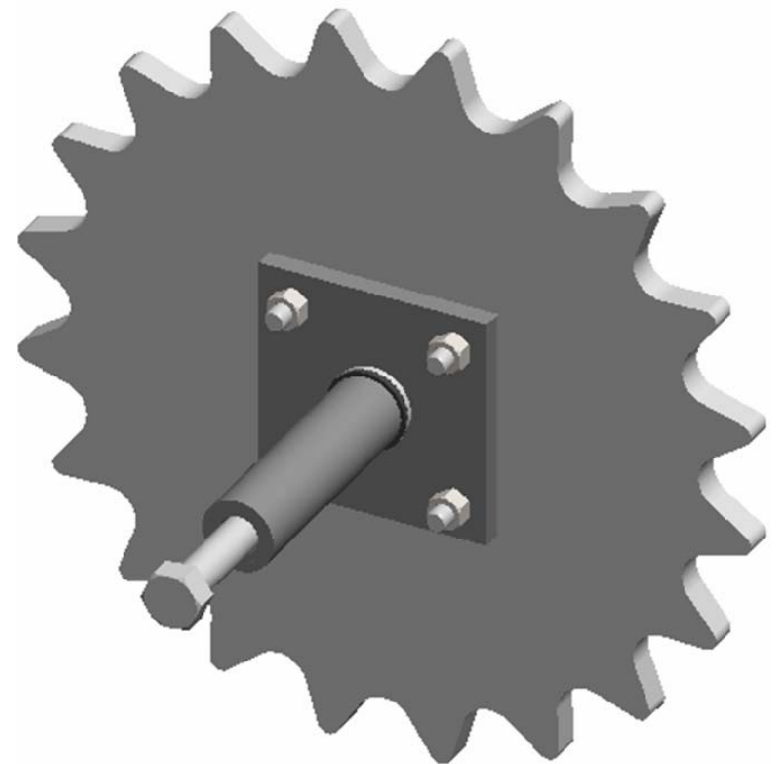


SCW-156



SPADING CLOSING WHEEL

Installation Instructions



Martin Planter Attachments

Martin Industries LLC

206 Elk Fork Road

Elkton, KY 42220

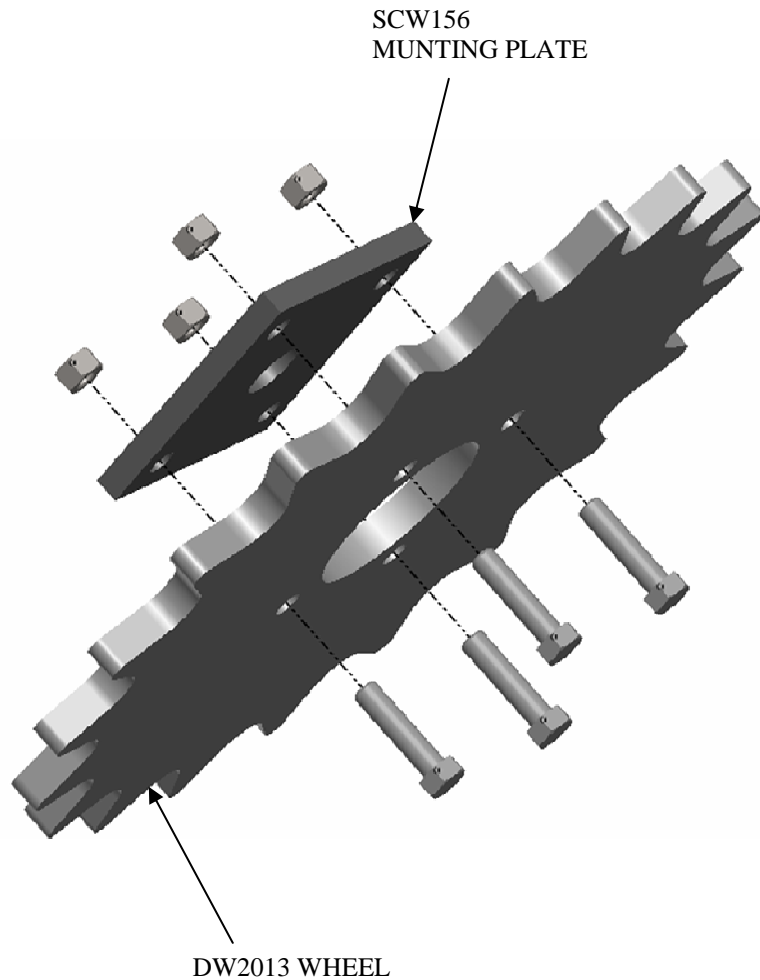
Telephone: 270-265-5817

E-Mail: martin@martinandcompany.com

www.martinandcompany.com

INSTALLATION INSTRUCTIONS

- 1) Place the SCW 156 Mounting Plate up too the DW2013Wheel.
- 2) Insert the four 3/8 x 1 1/2 bolts through the hole and thread on the 3/8 nuts then tighten.



INSTALLING SCW156 WHEEL ASSEMBLY TO GRAIN DRILL

- 1) Add the spacers to the small end of the SCW156 Shaft (**Note: The spacers are for adjustment, they can be applied to either side of the SCW156 Mounting plate**)
- 2) Insert the SCW156 Shaft thru the hole in the SCW156 Mounting Plate.
- 3) Insert the 5/8 x 7 1/2 bolt thru the bearing in the Grain Drill.
- 4) Slide the SCW156 Wheel Assembly on to the 5/8 x 7 1/2 Bolt.
- 5) Thread on the 5/8 Lock Nut and tighten

